



ARCHITECTURAL & ENGINEERING SPECIFICATION

Sundara® Surf Double basin lavatory system. Counter and integral basin to be constructed of White Sundara® solid surface pure acrylic resin with aluminum trihydrate and other additives. Easy access shroud enclosure, constructed of satin finished type 304, 18 gage stainless steel with vandal resistant hardware. Included hyropowered ZG6953-TMV-1 0.5 gpm spray aerator sensor faucet with thermostatic mixing valve, and ZG6953-SD liquid soap dispenser (right mount), 1/2" quarter turn supply stops, 3/8" flexible supply risers, chrome 1" tail piece and chrome 1" p-trap for complete system operation. Lavatory shall be mounted at standard height to conform with ANSI, UFAS, TAS and ADA Accessibility Standards.

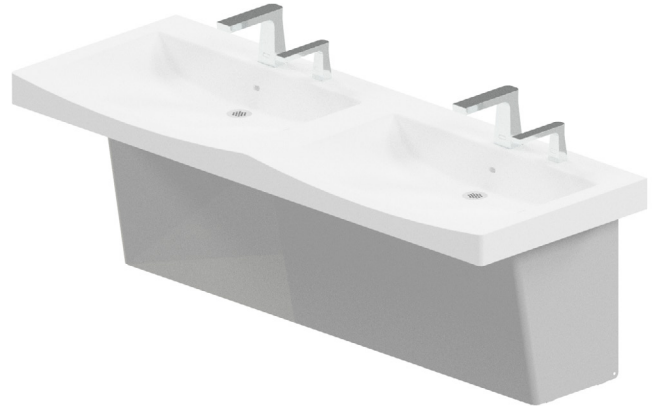
PRODUCT FEATURES

- Sundara® engineered solid surface
- Stainless steel ADA compliant shroud, vandal resistant and easy to install
- Non-splash basin design
- Right side integrated soap hole
- Zurn One orders include all required components for installation and Z8700 series P trap along with Z8802 series supply stops with 16" flexible supplies
- Provided with chrome finish faucet, soap dispenser and grid drain.
- Provided with mounting bracket and wall bracket with necessary hardware for ease of installation
- Integral overflow

COMPLIANCE AND CERTIFICATION:

Meets the American Disabilities Guidelines and ANSI A117.1 requirements when installed according to these requirements.

- Complies with CSA B45.5 / IAPMO Z124 & IAPMO IGC 156
- ADA Compliant
- UPC Lead Free Compliant
- Complies with
ASME A112.18.1/CSA B125.1
ASME A112.18.2/CSA B125.2 (applicable to Waste Fitting) ASME
A112.6.1M (applicable to Carrier)
NSF/ANSI 61-9 (applicable to Faucet)



PRODUCT DESCRIPTION

Designed for modern commercial restrooms, the Sundara system delivers a superior user experience in both form and function. Crafted by world-class industrial designers Sundara combines seamless basin designs with curated faucets and soap dispensers, delivering a complete, easy to install hand washing solution.

ARCHITECTURAL & ENGINEERING APPROVAL



FAUCETS

SENSOR FAUCET



ZG6950



ZG6951



ZG6953



ZG6955



ZG6956



ZG6913



ZG6915



ZG6920

MANUAL FAUCET



Z7440-XL-FC



Z81000-XL-3M



Z81101-XL-3M



Z81104-XL-3M



Z812B4-XL-3F



Z86100-XL-3M



Z86500-XL-3M

SINK OPTIONS

Single Hole, No Faucet

4" Center Hole, No Faucet

SENSOR FAUCET POWER SUPPLY OPTIONS (COME STANDARD HYDRO POWER, BATTERY BACKUP)

- ACA Plug-in Power Converter with Battery Backup
- CWB Connecting Wire for Hardwire with Battery Backup Installation (7 ft)

SENSOR FAUCET MIXING OPTION

- No Mixing
- MV Temperature Mixing Valve for Single Faucet
- TMV-1 Thermostatic Mixing Valve for Single Faucet

SENSOR SOAP DISPENSERS (OPTIONAL)

- SD Liquid Soap Dispenser
- FSD Foaming Soap Dispenser

BATTERY / BATTERY PLUG-IN

- Comes with A/C Adapter
- 4 "D" size alkaline included



Z6950-SD

Z6950-FSD



Z6951-SD



Z6953-SD

Z6953-FSD



Z6956-SD

Z6956-FSD

POSITION (FOR SOAP DISPENSER ONLY)

- Left
- Right
- No Soap Hole
- Left, no soap
- Right, no soap

RECOMMENDED ACCESSORIES

- Z1240-EZR Sundara Lavatory carrier
- P6000-HW6 Hardwired Power Converter (Powers up to 8 Faucets)

SENSOR FAUCET FLOW RATE OPTIONS

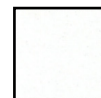
	FLOWRATE GPM [LPM]	VANDAL RESISTANT	WATERSENSE COMPLIANT	CEC, NYC 604.4 COMPLIANT	OUTLET TYPE
Standard	0.5 [1.9]	☑		☑	Spray
-E	1.5 [5.7]	☑	☑		Aerator
-J	1.5 [5.7]	☑	☑		Laminar
-K	1.0 [3.8]	☑	☑		Laminar
-L	1.0 [3.8]	☑	☑		Aerator
-M	0.35 [1.3]	☑		☑	Spray
-N	0.5 [1.9]	☑		☑	Laminar

BASIN COLORS (MUST SELECT ONE)

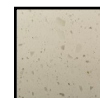
- White (01)
- Snow (02)
- Sea Shell (03)
- High Cliffe (04)
- Sand Storm (05)
- Alluvium (06)
- Frost (07)



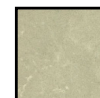
(01)



(02)



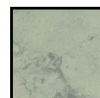
(03)



(04)



(05)

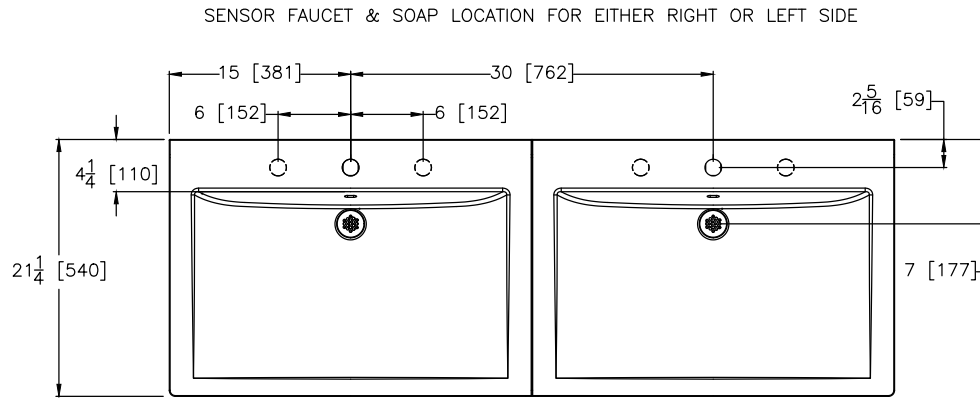


(06)



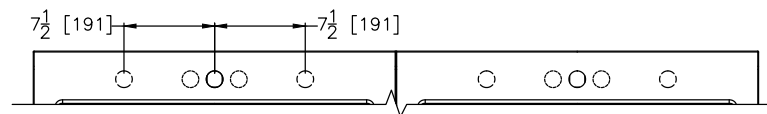
(07)

Rough-in/Overview dimensions

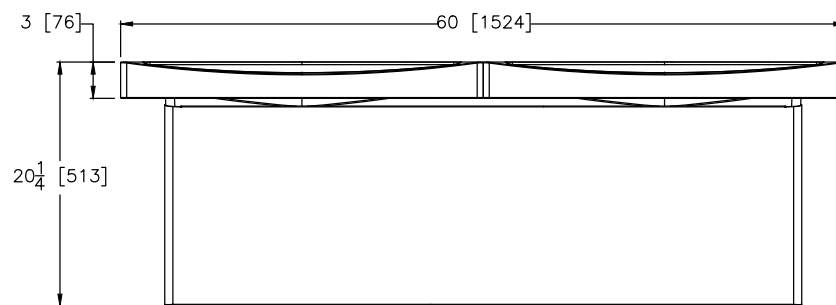


TOP VIEW

MANUAL FAUCET & SOAP LOCATION FOR 4" CENTER HOLE EITHER RIGHT OR LEFT SIDE

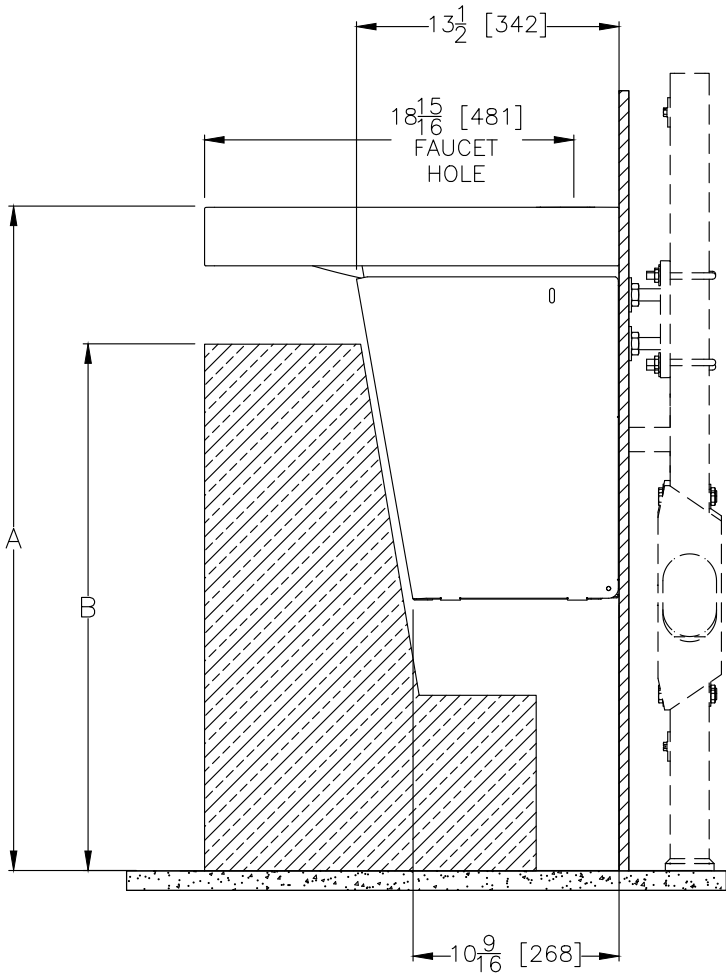


TOP VIEW



FRONT VIEW

Rough-in/Overview dimensions

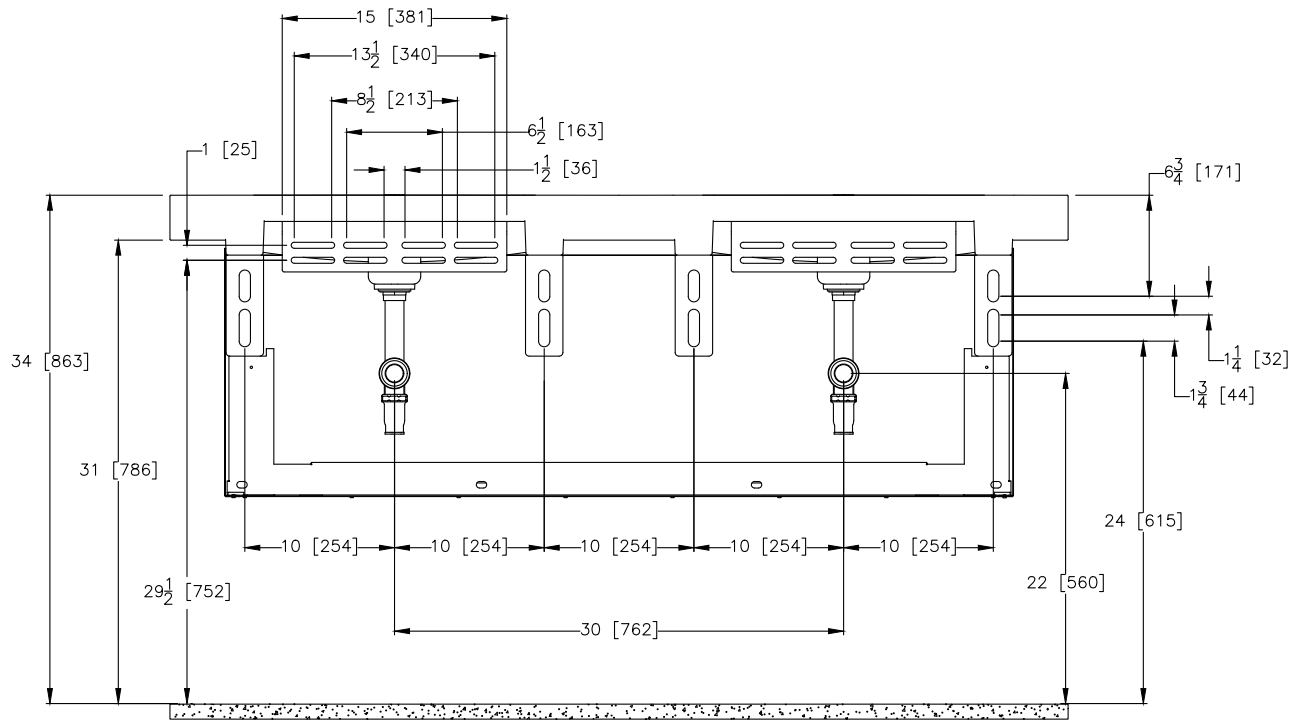


SIDE VIEW

*Shown with optional Sundara Z1240-EZR-WL

	ADA/TAS Regular Height	TAS Juvenile Height (Children 11-14 years)	ADA Juvenile Height (Children 6-12 years)	CSA Regular Height	OBC Regular Height
A	34"(863mm)	32"(812mm)	31"(787mm)	32 1/4 (820mm)	33"(838mm)
B	27"(686mm)	28"(712mm)	24"(610mm)	26 13/16"(680mm)	27"(686mm)

Rough-in/Overview dimensions



BRACKET VIEW

NOTE: Installing the P-trap outlet lower than 19.5" from the finished floor will prevent the vandal shroud from being installed



Z1240-EZR

Exposed Arm Carrier System for Sundara® Lavatory w/
Adjustable Uprights & Header Plates

TAG _____

Product Specification

The Sundara lavatory carrier is designed to reduce and simplify the Sundara Handwashing System installation while providing unmatched strength and stability. Zurn's Z1240-EZR carriers are engineered specifically for the Sundara basins to deliver a complete and unparalleled solution.

Carrier Features

- Engineered to reduce installation and rework time
- Pairs with Sundara engineered solid surface lavatory
- 300 lbs [136 kg] load capacity
- Exposed Arm Carrier System
- Adjustable Header Plates
- OSHPOD Compliant foot design
- Rulers mounted to uprights for easily determining spacings
- Carrier Arms supplied with lavatory

Standard Compliance

- ASME A112.6.1M

Materials

- ASTM A500 Grade C Steel Uprights
- ASTM A48 Class 25 Header
- Steel Hardware
- ASTM A36 Steel Plates

Options:

- | | |
|-----|---|
| -CU | Floor-to-Ceiling Upright
(Specify Height Required) |
| -SL | Stud Length over 6 [152] |
| -WL | Waste Line Sleeve |
| -WS | Wall Support Valve Plate
(Specify Valve Name and Number Tag) |

Architectural/Engineering Approval

The information contained in this document is subject to change without notice.
Please contact Zurn for most up to date information.



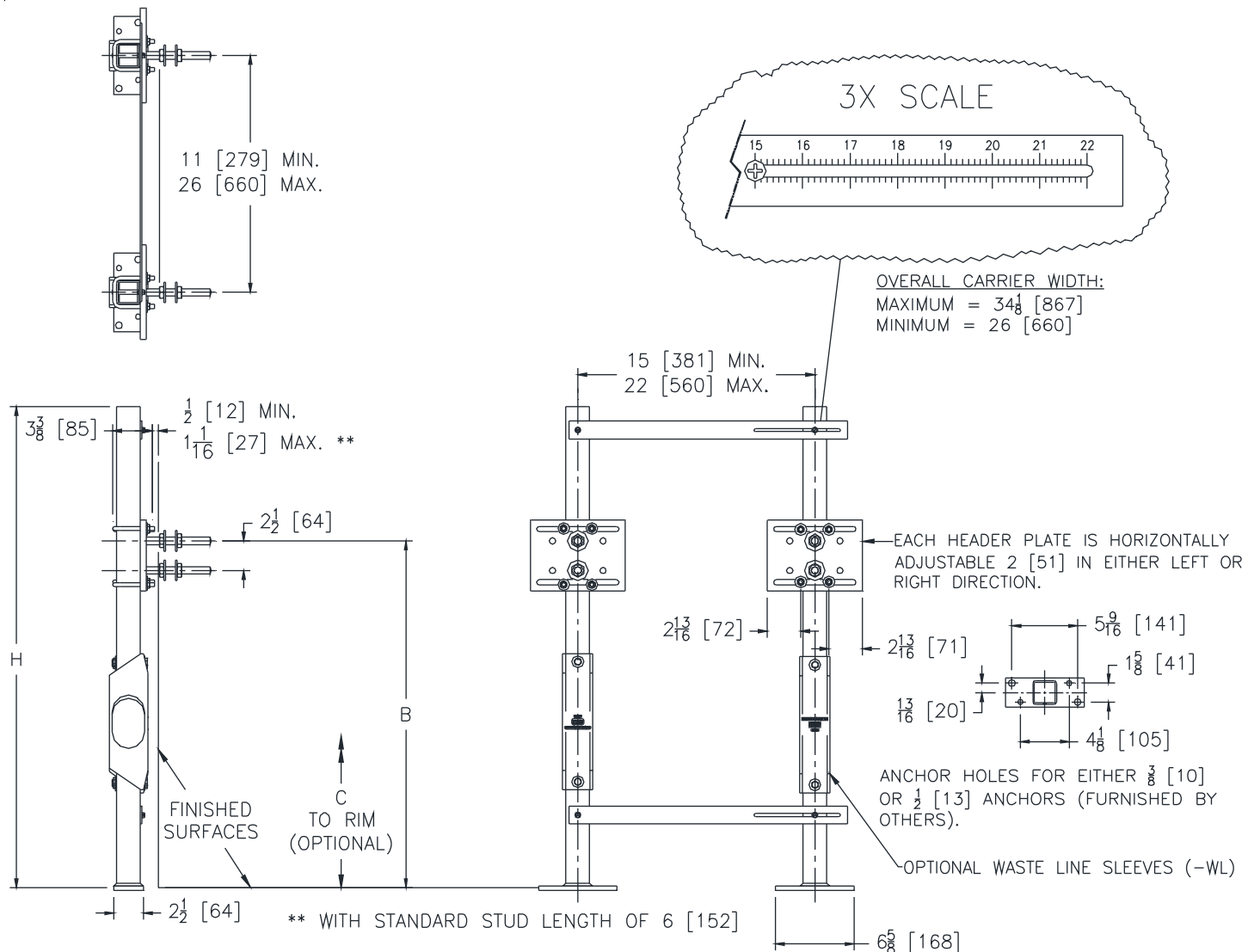
Shown with -WL Option



Z1240-EZR

Exposed Arm Carrier System for Sundara® Lavatory w/
Adjustable Uprights & Header Plates

TAG _____



Engineering Specification: ZURN Z1240-EZR

Wall Hung Lavatory Support System complete with Dura-Coated upright supports made from structural carbon-steel square tubing, conforming to ASTM A500 Grade C standards, with welded steel plate mounting feet featuring separate bolt patterns for using either 3/8" [10mm] or 1/2" [13mm] anchors, both meeting OSHPD spacing requirements. Includes lower and upper EZ-installation plates marked with an indexed ruler guide for accurate adjustability of upright spacing, from 15" [381mm] to 22" [560mm]. Individual slotted header plates provide 2" [51mm] of additional horizontal adjustment per plate allowing for a total horizontal adjustment range of 11" [279mm] to 26" [660mm]. Uprights, EZ-installation plates, and header plates are all factory assembled for easy installation. Carrier system exceeds load and deflection requirements when tested in accordance to ASME Standard A112.6.1M to any adjustment position.

Dimensional Data (inches and [mm]) are Subject to
Manufacturing Tolerances and Change Without Notice

* Regularly furnished unless otherwise specified.